

Director of Public Health Annual Report 2015/16

Health & Wellbeing Board
7th June 2016

Rebecca Clarke, Public Health Specialist
Practitioner

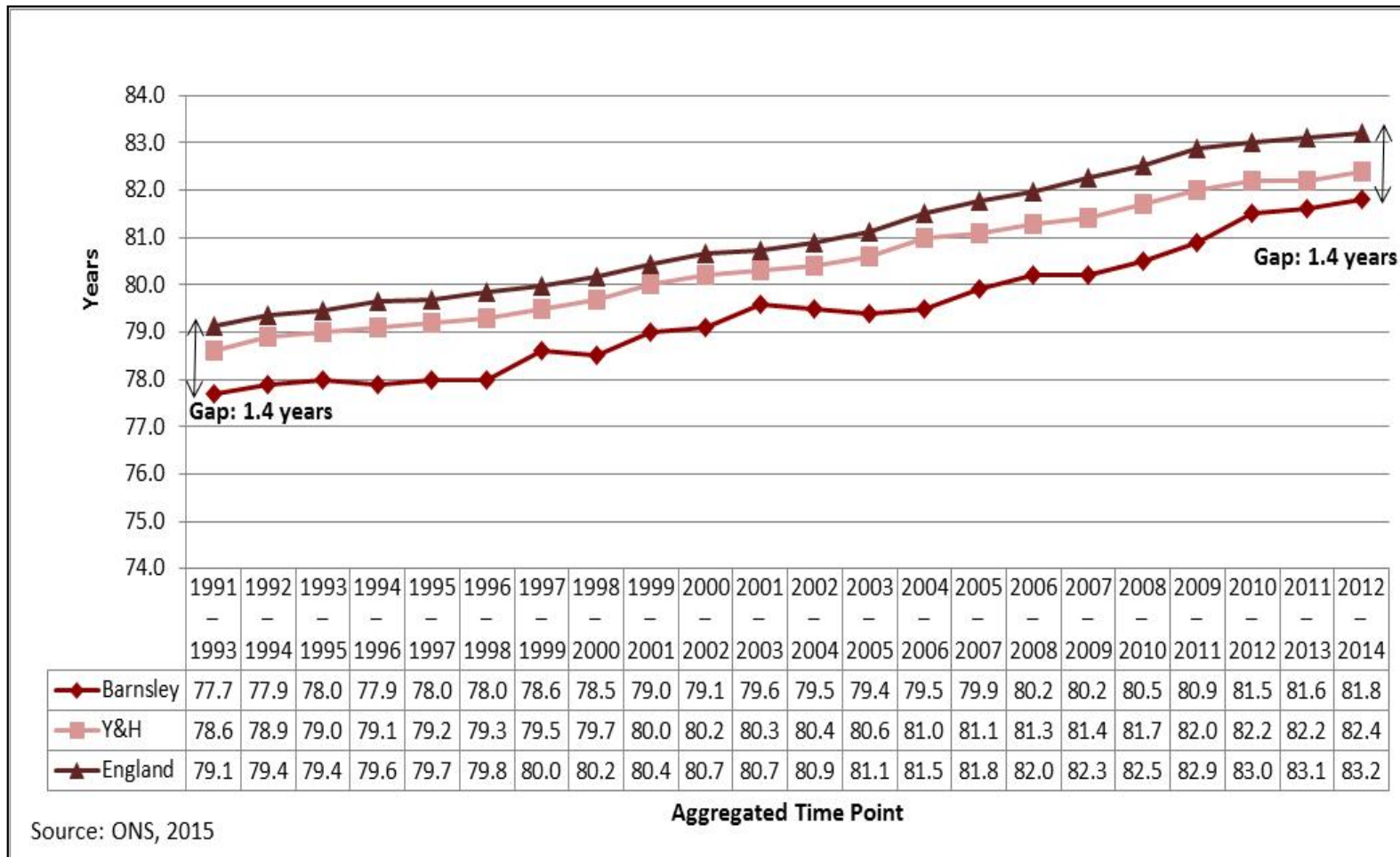


BARNSELY
Metropolitan Borough Council

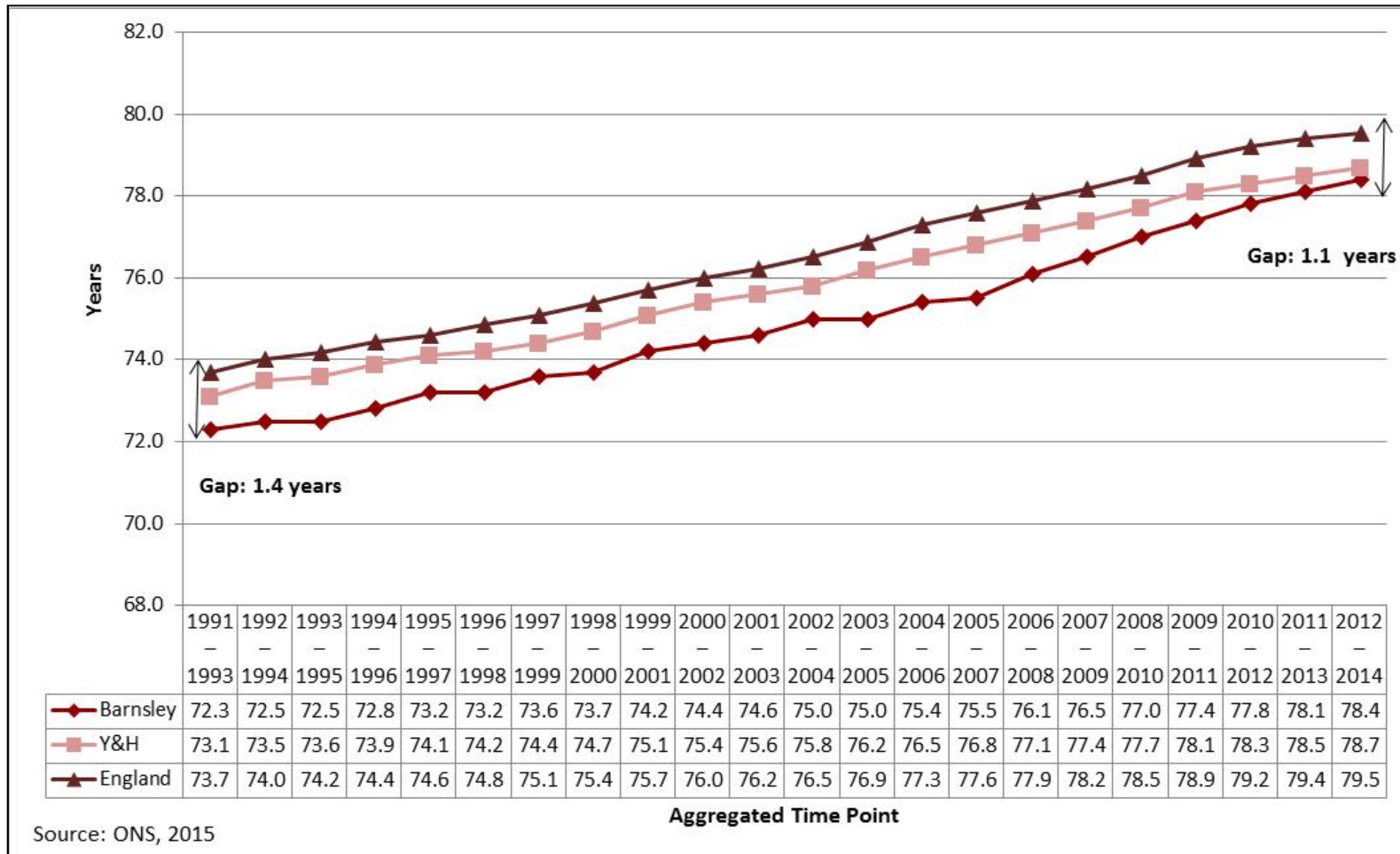
- The public health annual report is the independent review by the Director of Public Health
- The idea for this year was to describe recent innovative working in Barnsley to develop a Public Health Council through a distributed model of public health.



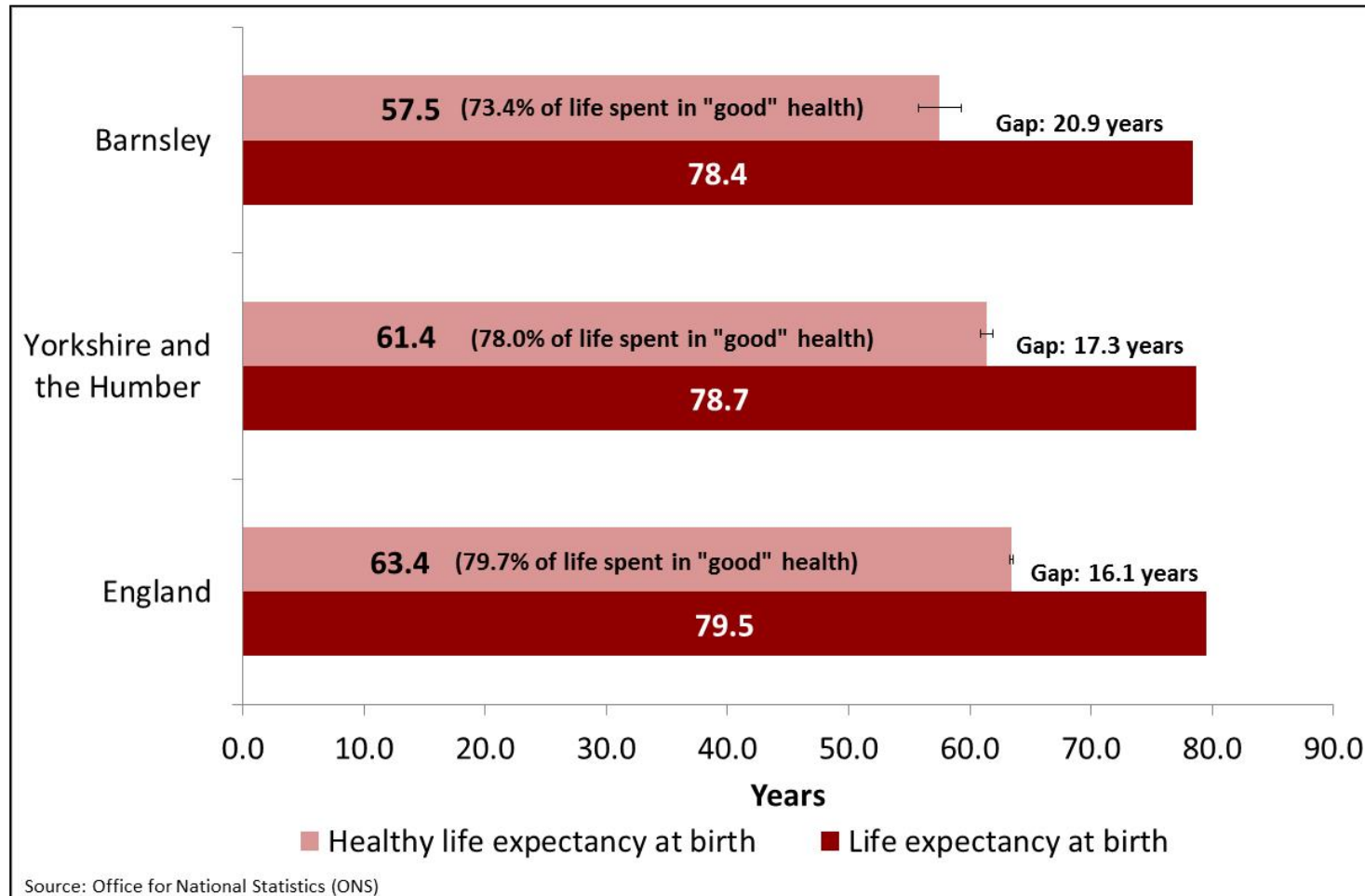
Trend in life expectancy at birth for women in Barnsley, compared with Yorkshire and the Humber and England



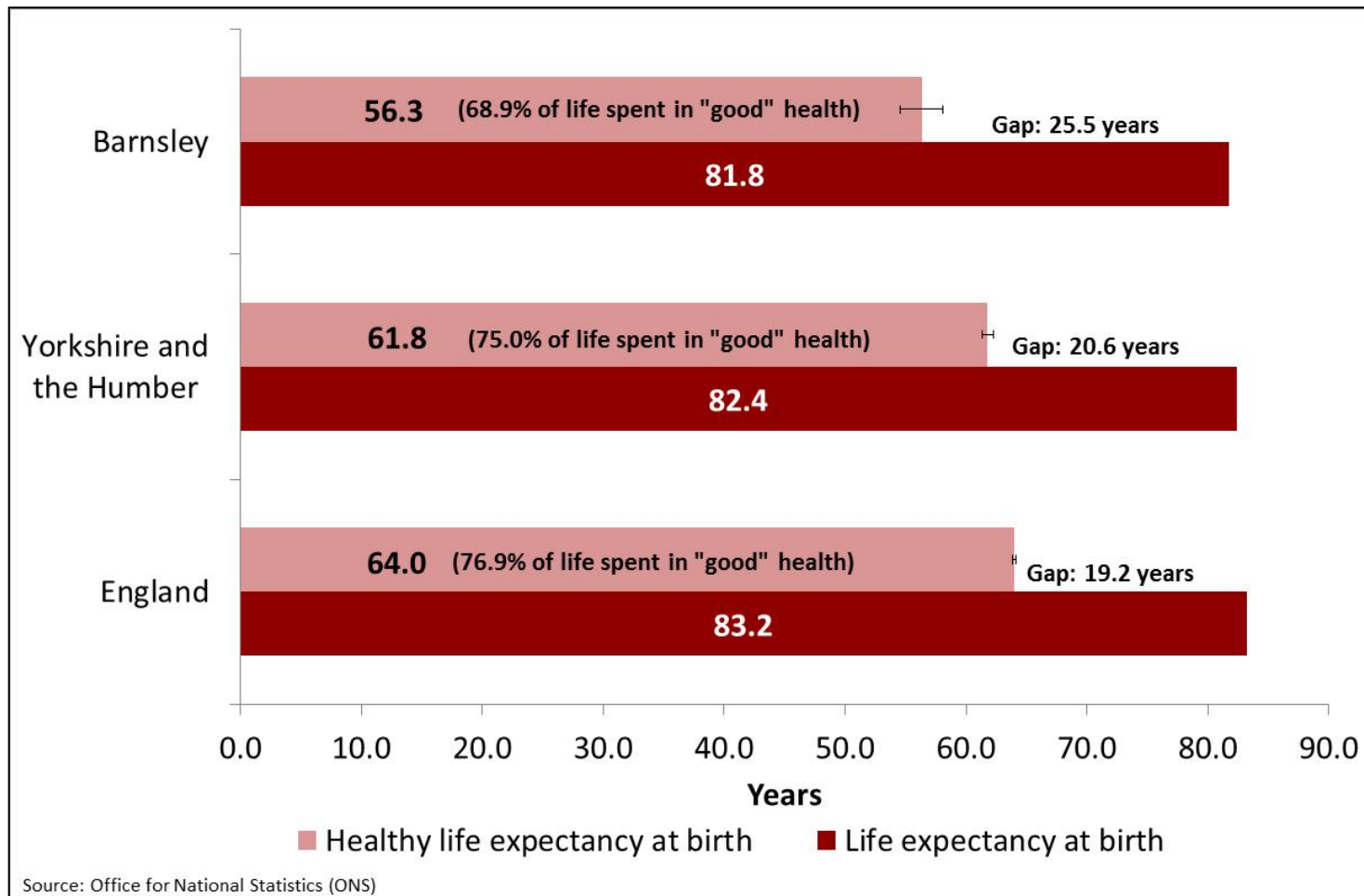
Trend in life expectancy at birth for men in Barnsley, compared with Yorkshire and the Humber and England



Life expectancy at birth, healthy life expectancy at birth and the proportion of life spent in “good” health: Men in Barnsley compared with Yorkshire and the Humber and England (2012-14)



Life expectancy at birth, healthy life expectancy at birth and the proportion of life spent in “good” health: Women in Barnsley compared with Yorkshire and the Humber and England (2012-14)



Introduction from the
Director of Public Health



<https://www.barnsley.gov.uk/publichealthannualreport>



COMMUNITIES

DIRECTORATE

The following pages contain information on areas of work within the Communities Directorate of Barnsley Council, which encompasses areas of public health intended to make our communities safer, stronger and healthier.

This directorate is involved with many different areas related to public health such as housing, infant feeding, supporting troubled families, policing, volunteering and planning health services.

- 1** Safer Communities
- 2** Stronger Communities
- 3** Healthier Communities



PEOPLE DIRECTORATE

The following pages contain information on areas of work within the People Directorate of Barnsley Council. The Health and Wellbeing Team within this directorate work on areas of public health ranging from children to older people, including:

- 1** Early Help for Children and Young People
- 2** Emotional Health and Wellbeing of Children and Young People
- 3** Public Mental Health
- 4** Preventing Falls and Improving Bone Health in Older People
- 5** Preventing Dementia

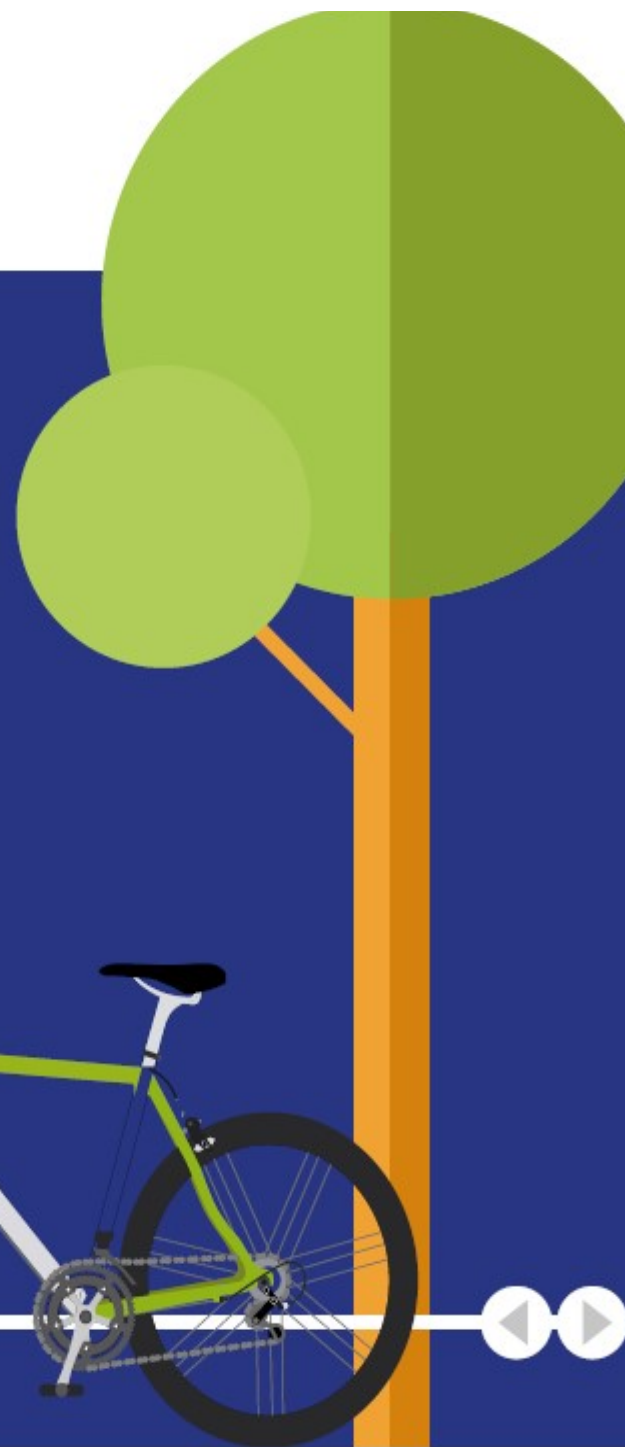


PLACE

DIRECTORATE

The following pages contain information on areas of work within the Place Directorate of Barnsley Council. This directorate comprises teams working on employment, physical activity, housing and regulation:

- 1** Wider Factors Influencing Health
- 2** Workplace Health
- 3** Helping People with Health Issues into Work
- 4** Physical Activity and Sport
- 5** Fuel Poverty and Excess Winter Deaths
- 6** Food Hygiene and Standards
- 7** Pollution Control



CORE PUBLIC HEALTH

The following pages contain information on areas of work within the Core Public Health Directorate of Barnsley Council. Staff in this team work on a wide variety of areas relating to health promotion, health services and health protection:

- 1** NHS Health Checks
- 2** Suicide Prevention
- 3** Vaccination and Immunisation
- 4** Children and Young People's Health
- 5** Sexual Health
- 6** Alcohol and Tobacco
- 7** National Child Measurement Programme
- 8** Public Health Specialist Advice to the CCG
- 9** Barnsley Child Death Overview Panel
- 10** Children's Oral Health





Barnsley Council
@BarnsleyCouncil

Find out how we're tackling **#publichealth** in **#Barnsleyisbrill** with our interactive report bit.ly/1pARpV3



Rob Newton
@RobNewton15



Following

Well done to **@BarnsleyCouncil** for a clear interactive DPH report on how Public Health is organised **@PeterRoderick15** barnsley.gov.uk/media/2616/bar ...

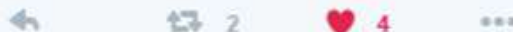
7:08 PM - 27 Apr 2016



Geraldine Strathdee @DrG_NHS · Apr 25
Wow! Public health report with a difference & Gr8 graphics **@GregorWell** **@ProfKevinFenton** **@SamJLane** **@GarySlegg** **@KSBhui**

Dr Andrew Furber @FurberA

Excellent report showing how **#PublicHealth** is operating throughout **@BarnsleyCouncil** barnsley.gov.uk/publichealthan... **@LGAWellbeing** **@ADPHUK** With link!



BARNESLEY
Metropolitan Borough Council